



Grapevine



NOTICEBOARD

AccessMaps

A new Logo for Skillet

You may have noticed the Skillet logo has changed to

AccessMaps

To log-in change your website address to:
<https://app.accessmaps.com/login>

Having trouble?

Please contact Reception, 09 838 6567
Happy to visit you at your Villa to check AccessMaps (Skillet) for you.

Log in

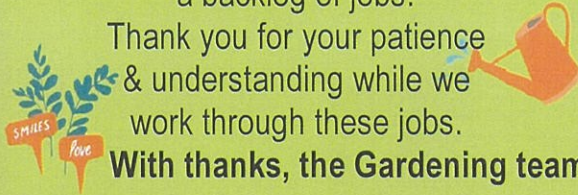
Available at the Pavilion Computer Hub

A MESSAGE FROM THE ONS DORP GARDENING TEAM

We are currently experiencing a backlog of jobs.

Thank you for your patience & understanding while we work through these jobs.

With thanks, the Gardening team



Volunteer Bus drivers

The Care Centre residents would love to have more bus trips, weather permitting. We are looking for a person with a valid Drivers Licence and confident to drive our **MANUAL** geared van. You will always be accompanied in the van by a First Aid qualified staff member. The are scenic trips only, and will be approximately 2hours long.

Please contact reception if you are interested 09 838 6567

From the

Desk of the Village General Manager

Hi all,

Planning and Strategic Document for Ons Dorp Village

Over the last month I have worked on updating, adding Key Performance Indicators (KPI's) along with adding Ministry of Health text requirements to the Ons Dorp Strategic Plan (2025-2028). This revised Draft Plan will be considered, amended and approved at the March Trust Board meeting. Following feedback from the Works Committee I have also updated the Ons Dorp Village 10 Year Maintenance Plan text and Position Descriptions for 9 staff excluding those who directly report to the Clinical Manager.

Latest Update on Villas sold and upcoming Villas.

Currently BMC Contractors Bryce and Missy are in the process of refurbishing 2 Villas, one of which I am pleased to report sold (under contract) in less than a week.

The new owner / resident for Villa 26 will move in on Wednesday 26th March 2025.

continued over...

A big
THANK YOU!

To all Villagers for being patient while NCS went through every Villa, testing the Emergency Call Bells and Smoke Alarms. The NCS technicians were able to finish with only a few minor fixes. Well done everyone!

FRIENDS WE HAVE LOST

CARE CENTRE:

TERRY VAUGHAN - 15 FEBRUARY, 2025

Our condolences to family & friends
Wishing anyone who is unwell or in hospital a speedy recovery.

NEW POSTAGE PRICES

Kiwistamps have a new value of \$2.30
All other postage has increased by .30c
Netherlands — \$4.30 Australia — \$3.60
All stamps available at Reception

ALL Care Centre Visitors MUST sign in at Reception

All visitors are required to sign
The visitors book as this is a
Health & Safety requirement.



The secret of staying
young is to live honestly,
eat slowly, and lie
about your age.

LUCILLE BALL



Happy Birthday!

at the Care Centre

February

89	Beverly Blewett	2
93	Antonia Purcell	14
92	Betty Geraets	26
77	Ivan Ivanovic	26



... from previous page

Electrical, Plumbing / Drainage or Gutter, Iron / Tile roof issues with Villas

Every month working with Peter (Maintenance Coordinator) and Richard (Maintenance Support) to discuss / assess any Villa jobs that need doing in the above areas from jobs that are logged onto the AccessMaps (Skillnet) System. As necessary approved written quotes are obtained from our Electrician, Plumbers and roofers. As mentioned previously I work with the Maintenance Staff and these external trades providers to manage and determine solutions to some more serious issues in these maintenance areas.

Care Centre Certification Audit Planning.

On the 6th and 7th March the BSI Group NZ on behalf of the Ministry of Health are doing an Audit of the Care Centre.
Rajender Gill our Clinical Manger will be hosting them and they will meet with myself and members of the Trust Board.

Gary Williams, General Manager

ONS DORP RESIDENT LIAISON ADVISORS Mieke Penning is available Mondays & Thursdays



PLEASE NOTE: Mieke will not be available to visit on a Public Holiday that falls on a Monday or Thursday.

A big welcome to Joop van Herk available on Wednesdays



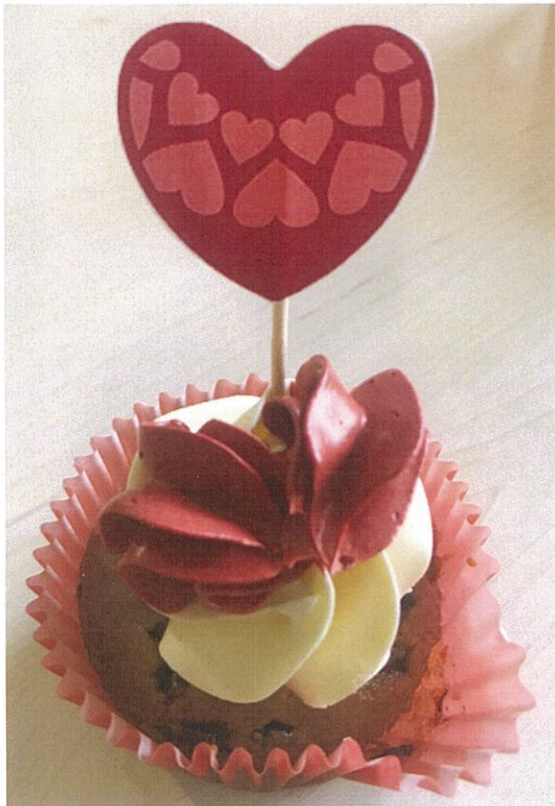
PLEASE NOTE: Joop will not be Available to visit on a Public Holiday that falls on a Wednesday. Joop will be on holiday 5 February, back 12 February.

Contact the Care Centre Reception
on 838 6567 if you require a visit.

RESIDENT LIAISON SERVICES

News from the Ons Dorp Care Centre

Valentines Day
14 February 2025



Above: Our Caterplus chef for the day made these wonderful afternoon tea cupcakes, what a treat!



Cat-ercise!

Our lovely resident cat Charlie decided to join the exercise class with residents and Cathy (physio assistant) — purr-fect stretching by all. 😊

Farewell
Martina
wishing you *ALL THE BEST*



Martina Drumm, a resident of nine and a half years recently moved up to Whangarei to be closer to family and friends. We had a wonderful morning tea celebration before she left in her mobility van accompanied by family. We will miss you Martina.

News from the Ons Dorp Care Centre

Happy Hour Fun

7 February 2025

Left: Jepsy our Registered Nurse was treated to a lovely baby shower, enjoyed by staff and residents. Not long to go now! It's a boy@



TRUST BOARD MEETING
27th March

Need to do some printing? We have a colour printer in the Pavilion computer room. If you need to know how to use this printer contact Reception. **Don't forget to leave the printer on.** The service team need access for toner supply requests, and any other issues with the printer. Want to learn how to use this printer? Call Reception 09 838 6567 to book a time to have a tutorial.

Wearing a mask is encouraged here
Masks help to protect yourself and others
at the Ons Dorp Care Centre

Te Whatu Ora Health New Zealand

Auckland Council Libraries
Nga Pataka Korero o Tamaki Makaurau

PICK-UP WILL BE

ALL RETURNS can be dropped off to the Care Centre Reception. Please **DO NOT** return your books to the Ons Dorp Pavilion Library.

12
MARCH

PLEASE DO NOT FEED THE FISH WHEN VISITING IN THE ATRIUM


Editor: Reception
09 838 6567
onsdorp@onsdorp.co.nz

VILLA MEAL DELIVERIES

The Care Centre can provide meals which can also be delivered for **\$10 each meal, 7 days a week.**

If you wish to order a meal contact Reception or the Kitchen. You can also request a menu from Reception. The kitchen would also like to remind residents to please rinse your plates, and please **DO NOT** return any of your own cutlery.

March 2025

Mon	Tue	Wed	Thu	Fri	Sat	Sun
					1	2 Children's Day
3	4	5	6	7	8	9
10	11	12	13	14	15	16
17 St Patrick's Day 	18	19	20	21	22	23
24	25	26	27 Trust Board Meeting 1.00pm	28 Market Day Beatrix Pavilion	29	30
31						

RECYCLING TOP TIPS

Keep it clean -
empty and rinse
Remove **ALL** lids
and put them in the
rubbish bin
**DO NOT crush or
flatten containers**
NO containers
larger than 4 Litres.

DO NOT place
newspapers,
cardboard etc in
plastic bags, better to
place in a cardboard
box.

ONLY cardboard
packing boxes should
be flattened. **If in
doubt, leave it out**

How much will it cost to send Standard Mail within New Zealand?

Size	Maximum size (height x length x width)	Maximum weight incl. envelope	Standard Mail required postage
Medium (e.g. E9, DLE, DLEE, MaxPop, Cheque Mailer)	130mm x 235mm x 6mm	500g	\$2.30 (or 1 x KiwiStamp)
Large (e.g. C5)	165mm x 235mm x 10mm	500g	\$3.60
Oversize (e.g. E35)	260mm x 385mm x 20mm	1kg	\$4.90

How much will it cost to send a letter overseas?

Size	Maximum size (height x length x width)	Maximum weight incl. envelope	Australia and South Pacific	Rest of the world
Aerogramme & Postcards	130mm x 235mm	10 g	\$3.30	\$3.30
Medium (e.g. E9, DLE, DLEE, MaxPop, Cheque)	130mm x 235mm x 5mm	100g	\$3.60	\$4.30
Large (e.g. C5)	165mm x 235mm x 10mm	200g	\$4.30	\$4.90
Oversize (e.g. E35)	260mm x 385 x 10mm	200g	\$5.60	\$7.20

Before you send a letter overseas:

Letters must contain paper based written or printed documents only

Check your letter weighs less than 200gms. If your letter weighs more, then it is a parcel

Check your letter fits within maximum dimensions of 260mm x 385mm x 10mm (height x length x thickness).
If it does not fit, then it's a parcel

Envelopes need an Economy, or Par Avion service sticker in the upper left-hand corner.



NZPost

Sending letters or postcards